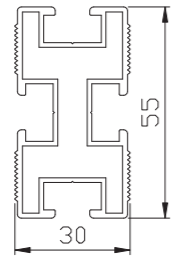


Optional Components



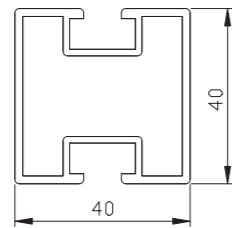
318-72001-01 Rail A



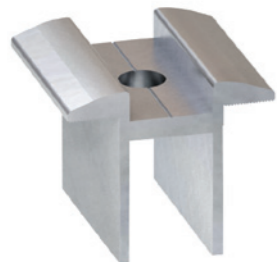
- Material : AL 6063-T6
- Supporting modules, suitable for a variety of installations
- Standard types: 2120mm/3140mm/3420mm



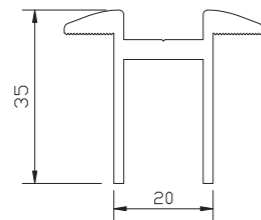
318-72002-00 Rail B



- Material : AL 6063-T6
- Supporting modules, suitable for a variety of installations
- Standard types: 2120mm/3140mm/3420mm



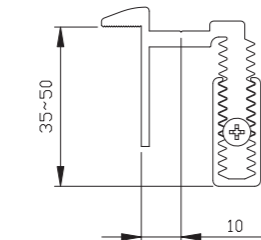
318-74012-00 Middle Clamp Assembly - B01



- Material: AL 6063-T6
- Fixing modules, suitable for modules of thickness ranging from 35mm to 50mm

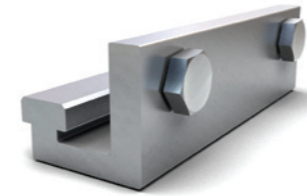


760-30003-00 Adjustable End Clamp Assembly - B01

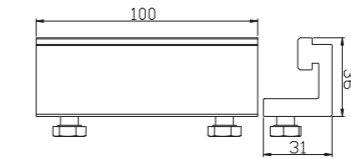


- Material: AL 6063-T6
- Fixing modules, suitable for modules of thickness ranging from 35mm to 50mm

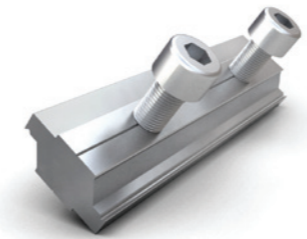
Optional Components



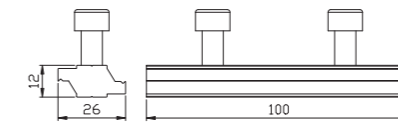
760-30080-00 Rail Connector Assembly - D01



- Material : AL 6063-T6/SUS 304
- Connection of adjacent rails
- Screw: Hex screw M8*10mm



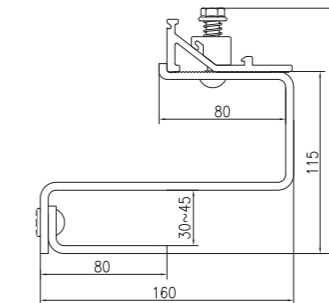
760-30079-00 Rail Connector Assembly - C01



- Material : AL 6063-T6/SUS 304
- Connection of Rail C
- Screw: Hex screw M8*10mm



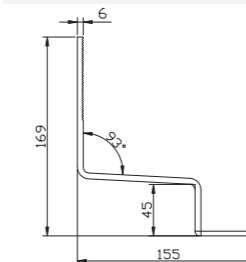
760-30100-00 Hanging Hook Assembly



- Material : SUS 304
- Fixed to the beams without screws
- Easy and convenient installation



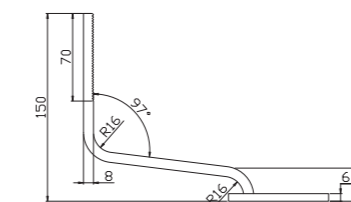
373-70062-00 Hook B



- Material : SUS 304
- Connection of rails to wooden beams,
- Fixed from the side
- Highly adjustable



373-70063-00 Hook C



- Material : SUS 304
- Connection of rails to wooden beams,
- Fixed from the side
- Highly adjustable