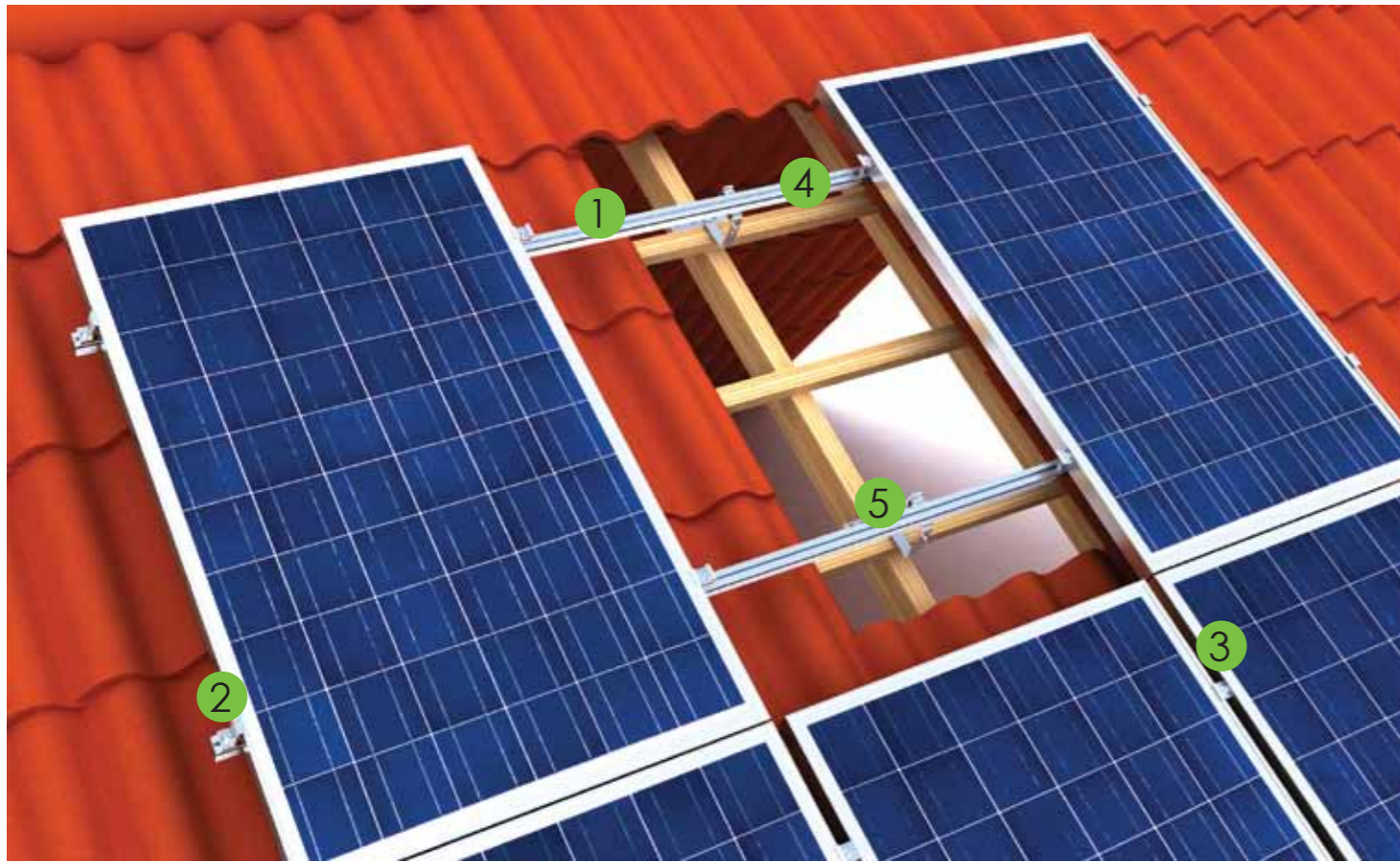


# T series Tile Roof Mounting System

# Components List for T-A



5 T series Tile Roof Mounting System is further divided into 4 types, namely: T-A, T-B, T-C and T-D for your choice.

- The main material of T-A series Tile Roof Mounting System is aluminum alloy (6063-T6). Compared with traditional steel mountings, it has light weight, easy shipment and easy installation features. The Tile Roof Mounting System is widely used in pitched tile roof photovoltaic system.
- Our intelligent design will not damage the tiles. Its also has high pre-assembling design, highly compatibility features enable the possibility of quick installation.

	<p><b>1</b> 318-71091-00 Rail D</p> <ul style="list-style-type: none"> <li>■ Material : AL 6063-T6</li> <li>■ Supporting modules, suitable for variety of installations</li> <li>■ Standard types: 2120mm/3140mm/3420mm</li> </ul>
	<p><b>2</b> 760-30034-00 Adjustable End Clamp Assembly - A01</p> <ul style="list-style-type: none"> <li>■ Material : AL 6063-T6/SUS304</li> <li>■ Fixing modules, suitable for modules of thickness ranging from 35mm to 50mm</li> </ul>
	<p><b>3</b> 760-30056-00 Middle Clamp Assembly - A01</p> <ul style="list-style-type: none"> <li>■ Material : AL 6063-T6/SUS304</li> <li>■ Fixing modules, suitable for modules of thickness ranging from 35mm to 50mm</li> </ul>
	<p><b>4</b> 760-30086-00 Rail Connector Assembly - A01</p> <ul style="list-style-type: none"> <li>■ Material : AL 6063-T6/SUS304</li> <li>■ Connection of adjacent rails</li> <li>■ Can be used with Rail A, Rail B, Rail D</li> </ul>
	<p><b>5</b> 760-30060-00 Hook Assembly - A01</p> <ul style="list-style-type: none"> <li>■ Material :SUS304</li> <li>■ Connection of rails to wooden beams</li> <li>■ Fixed from the top, vertically adjustable.</li> </ul>