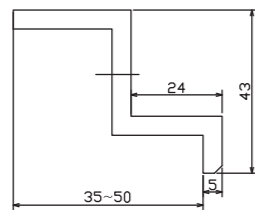


Components list for G-B-1/G-B-2



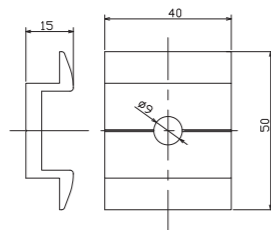
End Clamp 30mm-50mm



- Material: hot dip galvanized steel Q235B
- Fixing modules, suitable for modules of thickness ranging from 35mm to 50mm



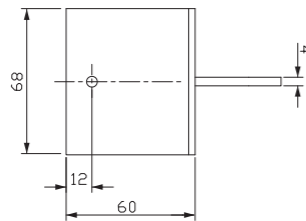
318-73003-00 Middle Clamp - A01



- Material: AL6063-T6
- Fixing modules, suitable for modules of thickness ranging from 35mm to 50mm



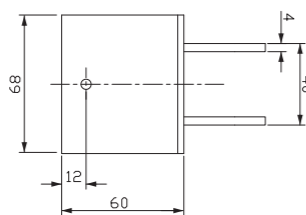
373-70265-00 Round Leg A



- Material: hot dip galvanized steel Q235B
- Connecting component



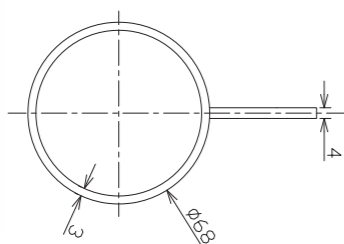
373-70266-00 Round Leg B



- Material: hot dip galvanized steel Q235B
- Connecting component



373-70267-00 Round Leg C



- Material: hot dip galvanized steel Q235B
- Connecting component

Mechanical Parameters for G-B-1/G-B-2

I 、 Load Parameters

The intensity, stiffness and stability have direct relation with the cross section and modules' stress has direct connection with deformation and span. The table below is the result of loading capacity according to GB50009-2001(building code) parameters.

1、 Spanning from 2000mm to 2400mm load parameters:

Parameter Section	Wind Load(kn/㎡)	Wind Speed(m/s)	Snow Load(kn/㎡)	Installation Angle
41x41x2	0.8	30	0.8	fixed
41x62x2	1.2	35	1.0	fixed

2、 Spanning from 2400mm to 3000mm load parameters

Parameter Section	Wind Load(kn/㎡)	Wind Speed(m/s)	Snow Load(kn/㎡)	Installation Angle
41x62x2	0.8	30	0.8	fixed
41x82x2	1.2	35	1.0	fixed

Notes: The data above is applied for rail parts of mounting system. Others are required to be calculated based on specific situation by engineers.

II 、 Mechanical data for Ram post

1、 Test data:

Parameter Section	Compression Test(KN)	Stretching Test(KN)	Lateral Load Test(KN)
Ram Post 800x76x2	13.5	7.0	3.5
Ram Post 1200x90x3	25.0	14.0	6.0
Ram Post 1400x114x3	35.0	18.0	8.0
Ram Post 1600x76x3	26.0	16.0	6.0
Ram Post 2000x90x3	48.0	28.0	12.0

2、 Depth of Ram Post Ground Mounting System

The lode of Ram Post has direct relation with its depth and cross side dimension. The depth demands parameters such as soil analysis, wind load, snow load, earthquake load, arrangement and array of modules, ensuring safety and cost-effectiveness.

III 、 Tightening Torque for Screws

The Screw material is SUS304 or hot dip galvanized steel in all our mounting system. Data of tightening torque can be referred to the table below:

Specification	M8	M10	M12	M14
Locking Torque (Nm)	12~15	15~20	20~30	30~40