

## G-B-1 Ram Post Dual Module Ground Mounting System



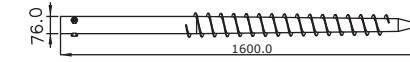
## G-B-2 Ram Post Single Module Ground Mounting System



■ This solution takes advantage of cement tricks or chunks to fix the mounting system, which provides easy installation and saves the labour cost greatly, fitting for large-scale ground system and concrete flat roof mounting system. The main body of mounting system adopts structural steel shapes, coupled with galvanized processing.

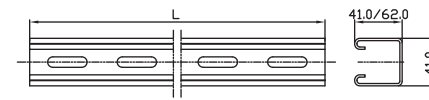
## Components list for G-B-1/G-B-2

### 373-70038-00 Ram Post Ground Mounting System



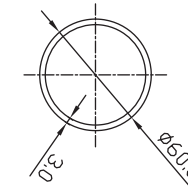
- Material: hot dip galvanized steel Q235B, which complies with ISO 1461:1991 standard
- Fixed underground, supporting the whole PV system
- Height: 1200-2000mm;  
Diameter:  $\Phi 50$ -130mm

### Rail, Side Support and Back Support



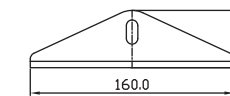
- Material: hot dip galvanized steel Q235B
- Main part of mounting system

### Sloped Support, Front Support and Back Support



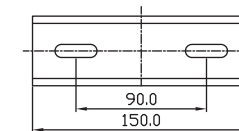
- Material: hot dip galvanized steel Q235B
- Main part of mounting system

### 373-70125-00 Junction B



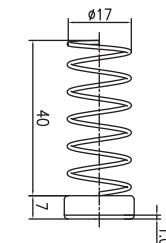
- Material: hot dip galvanized steel Q235B
- Supporting module connecting vertical and horizontal directions with adjustable angles

### 373-70232-00 Rail Connector



- Material: hot dip galvanized steel Q235B
- Connecting two steel rails nearby

### 412-06020-00 Spring Nuts



- Material: hot dip galvanized steel Q235B