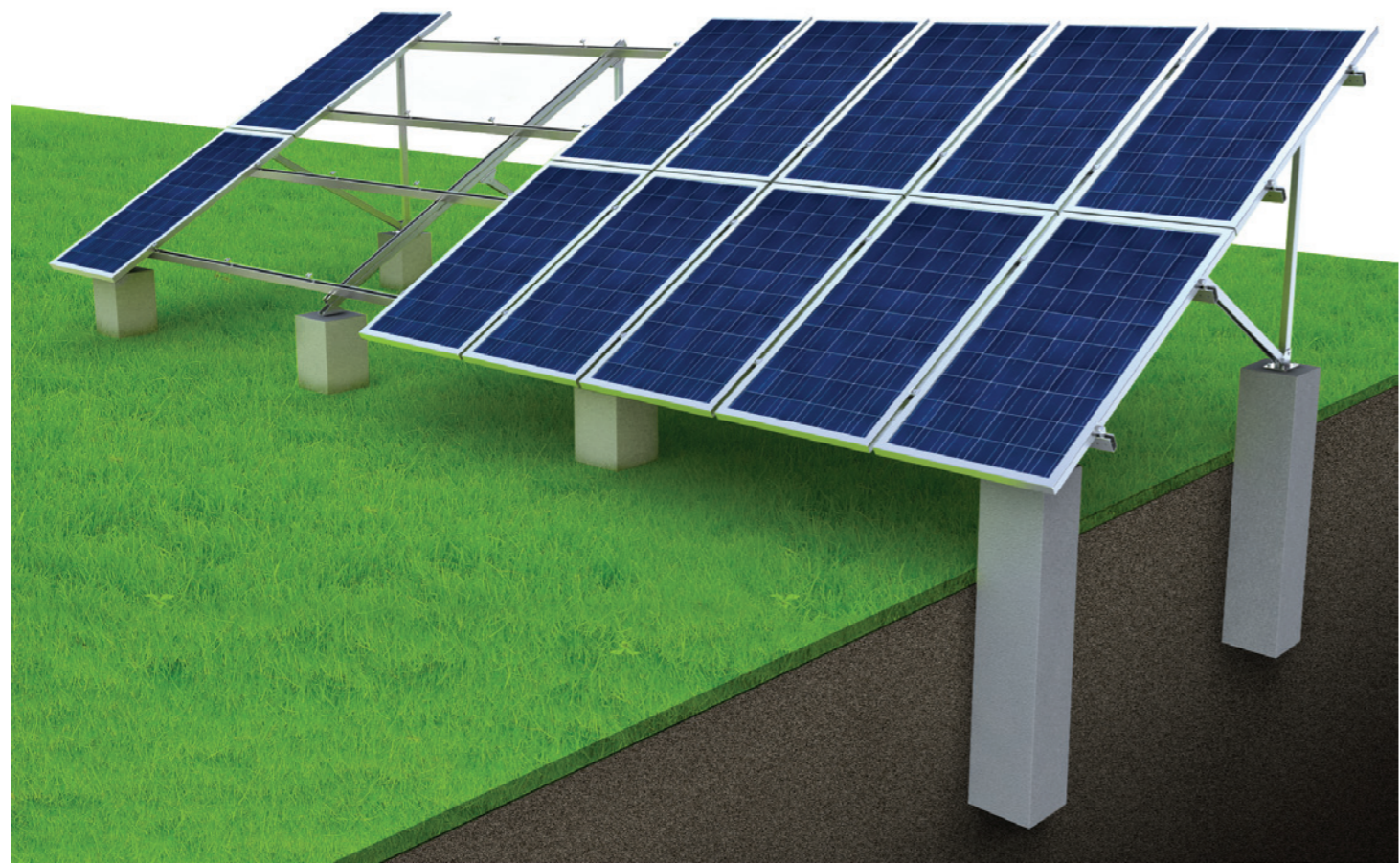


G-A Concrete Base Dual Module Ground Mounting System

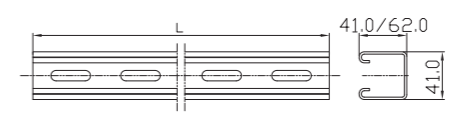


Such installation system fits for open ground and large-size PV plants. Cement columns penetrate into ground and tightly fixed. Screws are prepared on the cement columns, which are convenient for installing the footing of the mounting system. The main body adopts C-type galvanized steel, which offers elegance appearance and reliable quality.

Components list for G-A



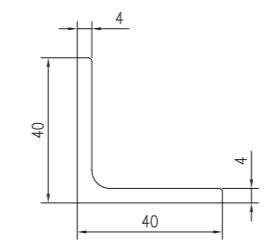
Rail, Sloped Support, Front Support, Side Support and Back Support



- Material: hot dip galvanized steel Q235B



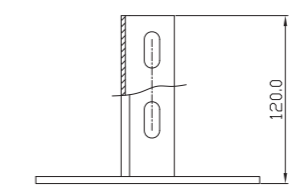
Angle Steel



- Material: hot dip galvanized steel Q235B
- Main part of the mounting system, supporting the whole stability



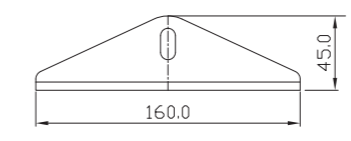
373-70129-00 Back Junction C



- Material: hot dip galvanized steel Q235B
- Increasing stability of the mounting system on the back



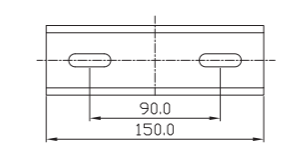
373-70125-00 Junction B



- Material: hot dip galvanized steel Q235B
- Supporting module connecting vertical and horizontal directions with adjustable angles



373-70232-00 Rail Connector



- Material: hot dip galvanized steel Q235B
- Connecting two steel rails nearby